



Drug and Alcohol Testing

BUILD | HEALTH

LFC recognises that the use of illegal drugs, misuse of legal drugs (including solvents) and the abuse of alcohol can impair job performance at work and can be a serious threat to safety, health, productivity and the environment.

Substances tested for (and related compounds): -

- COC - Cocaine
- THC - Tetrahydrocannabinol (active ingredient in the marijuana plant)
- mAMP - Methamphetamine (stimulant related to amphetamine)
- MTD - Methadone (opiates)
- OPI – Opiates
- AMP - Amphetamine

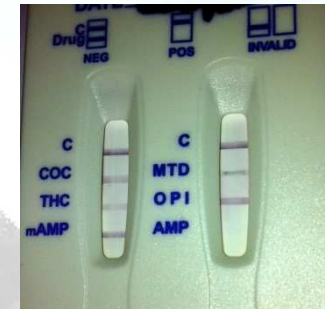
The legal level to drive safely in Northern Ireland.

Random Testing and For Cause Testing

- Completed by on call provider
- Full point of contact and lab analysis



Indicative (Induction) Testing



- Completed at all full inductions
- Indicative only - will be followed by a 'with cause' test undertaken by our on call provider if the test indicates a non-negative result or the breathalyser indicates a reading which exceeds the prescribed limit.

Statistics –

- Tested 60 persons randomly project start to date = 1.67% failure rate (all industry average is 6%).
- Inducted over 800 people project start to date = 0.375% indicative testing failure rate (1 failure confirmed by lab and 2 runners).



ARUP



URS

CHANDLERKBS